



# BIGFOOT ACADEMY ONSITE TRAINING



📞 1 877 740 6590

✉️ [training@bigfootcrane.com](mailto:training@bigfootcrane.com)

🌐 [academy.bigfootcrane.com](http://academy.bigfootcrane.com)



## Supervisor Crane & Rigging Awareness Course

Our 1 day supervisor crane & rigging awareness course is designed to train supervisors on how to observe whether or not crane and rigging duties are being performed properly.

### Crane Set-up and Safe Operating Practices

- Crane Set-up & Safe Operating Practices.
- Load Chart Interpretation (Knuckle Boom, Mobile & Tower Crane)
- Rigging Capacity Calculations
- Common Rigging Hazards
- Rigging Inspection & Rejection Criteria Including Wire Rope
- Suspended Work Platforms and DEP Boxes
- Critical Lift Planning
- Communications Knowledge
- WorksafeBC Regulations, ASME & CSA Standards
- Maintenance And Inspection Requirements
- Hazard Assessment & Pre-operational Inspections

The course fee is \$2,900.00 + GST per session for up to 10 participants. This course can be run at your location anywhere in Canada or at Bigfoot Crane Academy's Abbotsford or Agassiz Training Centres. (Instructor travel changes may apply outside of the Lower Mainland. Each student will receive a Crane & Rigging Awareness Course Participant Guide and a Certification of Training upon successful completion.



## Construction Hoist Operator Training Course (3 Days)

In our 3 day program, your crew will be trained in the most up to date practices in hoist and elevator operation, safety, and safety standards. Bigfoot Academy provides custom training at your location. Maximum number of students for on-site theory and practical training is ten (10) employees per session. By the end of the Hoist Operator training course, the candidates will be fully equipped to fulfill the set standards of the Technical Safety BC theory exam.

### Rate per person

- |                            |                             |
|----------------------------|-----------------------------|
| 1) \$4,500.00 = Total      | 5) \$1,800.00 = \$9,000.00  |
| 2) \$2,500.00 = \$5,000.00 | 6) \$1,700.00 = \$10,200.00 |
| 3) \$2,250.11 = \$6,750.00 | 7) \$1,600.00 = \$11,200.00 |
| 4) \$2,000.00 = \$8,000.00 | 8) \$1,500.00 = \$12,000.00 |
|                            | 9+) \$1,450.00 per person   |

The is \$2,950.00 + GST for 1-day session or \$2,650.00 + GST per day for multi-day sessions.

## Folding Boom Crane Theory & Practical Training

This course is delivered at your location with a 1-day to 3-day duration depending on customer preference and outcome goals. Theory and practical content covered in this training session is designed to prepare operators for the full scope stiff boom crane certification assessment. Topics covered are:

### Theory

- Rigging Capacity Calculations
- Rigging Chart Interpretation with Quizzes
- Rigging Inspection and Rejection Criteria
- Critical Lifts as Per WorkSafeBC
- WorksafeBC Regulations, ASME & CSA Standards
- Folding Boom Crane Load Chart Interpretation with Quizzes
- Electrical Safety

### Practical

- Crane Set-up Requirements
- Safe Operating Practices
- Pre-operational Inspection
- Timed Target Course

The fee is \$2,950.00 + GST for 1-day session or \$2,650.00 + GST per day for multi-day sessions.

## Stiff Boom Theory & Practical Training

This course is delivered at your location with a 2-day to 3-day duration depending on customer preference and outcome goals. Theory and practical content covered in this training session is designed to prepare operators for the Full Scope Stiff Boom Crane Certification Assessment. Topics covered are:

### Theory

- Rigging Capacity Calculations
- Rigging Chart Interpretation with Quizzes
- Rigging Inspection and Rejection Criteria
- Critical Lifts as per WorkSafeBC
- WorksafeBC Regulations, ASME & CSA Standards
- Stiff Boom Crane Load Chart Interpretation with Quizzes
- Electrical Safety

### Practical

- Crane Set-up Requirements
- Pre-operational Inspection
- Safe Operating Practices
- Timed Target Course

The fee is \$2,950.00 + GST for 1-day session or \$2,650.00 + GST per day for multi-day sessions.

## Self-Erect Tower Crane Theory & Practical Training

For onsite training this is a 1-day to 3-day course depending on what the customer prefers. This course is designed to prepare operators for the Full Scope Stiff Boom Crane Certification Assessment. Topics covered are:

### Theory

- Rigging Capacity Calculations
- Rigging Chart Interpretation with Quizzes
- Rigging Inspection and Rejection Criteria
- Critical Lifts as Per WorkSafeBC
- WorksafeBC Regulations, ASME & CSA Standards
- Self-erect Tower Crane Load Chart Interpretation with Quizzes
- Electrical Safety

### Practical

- Crane Set-up Requirements
- Pre-operational Inspection
- Safe Operating Practices
- Timed Target Course

The fee is \$2,950.00 + GST for 1-day session or \$2,650.00 + GST per day for multi-day sessions.

## Mobile Crane Theory & Practical Training

This course is delivered at your location with a 3-day to 5-day duration depending on customer preference and outcome goals. Theory and practical content covered in this training session is designed to prepare operators for success during an apprenticeship or the written & practical Certification Assessments. Topics covered are:

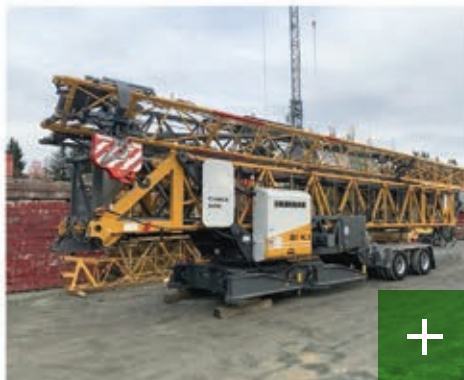
### Theory

- Rigging Capacity Calculations
- Rigging Chart Interpretation with Quizzes
- Rigging Inspection and Rejection Criteria
- Critical Lifts as Per WorkSafeBC
- Crane Related Math Calculations
- Electrical Safety
- Mobile, Stiff Boom & Folding Boom Crane Load Chart Interpretation with Quizzes
- WorksafeBC Regulations, ASME & CSA Standards
- Machine Power Flow
- Transport Regulations

### Practical

- Crane Set-up Requirements
- Pre-operational Inspection
- Safe Operating Practices
- Timed Target Course

The fee is \$2,950.00 + GST for 1-day session or \$2,650.00 + GST per day for multi-day sessions.



**BIGFOOT**  
CRANE COMPANY

1 877 740 6590  
training@bigfootcrane.com  
academy.bigfootcrane.com



## Overhead Crane & Rigging Course

Taught by accomplished Crane and Rigging Instructors at your location, this course combines in-class content with practical experience. Students receive 6 hours of classroom theory and **2 hours of hands on** practical training to ensure your employees are well trained and qualify overhead crane operators as per WorkSafeBC regulations.

\$2,950.00 + GST. This price includes an instructor and material for up to 10 participants, for one 8-hour day

## Equipment Training

Bigfoot Academy's Equipment Training offers specialized on-site operator training. Taught by IVES Certified trainers, these programs are designed to ensure your operators receive practical, job-specific instruction directly at your location. Our hands-on training approach enhances operational safety and efficiency by using your actual equipment, making the learning experience relevant to your crew. Enhance your workforce's skills and achieve safety and regulatory compliance with our comprehensive Equipment Training.

### Training Offered for the Following Equipment

- > Forklift
- > Telehandler
- > Sissor lift
- > Mobile elevated work platform
- > Skid steer






 [Schedule a Class 1 877 740 6590](tel:18777406590)

Since 2008, Bigfoot Academy has been the oldest private crane training provider in BC. Our training programs are designed to prepare graduates for excellence in their field. Our courses are among the best in the country, thanks to our thorough dedication to detail and protocol. Our crane training programs are supported by Fulford and BC Crane Safety.

### Learn More About The Bigfoot Academy

by visiting Our Crane Academy & FAQ page on our website.



-  1 877 740 6590
-  [training@bigfootcrane.com](mailto:training@bigfootcrane.com)
-  [academy.bigfootcrane.com](http://academy.bigfootcrane.com)