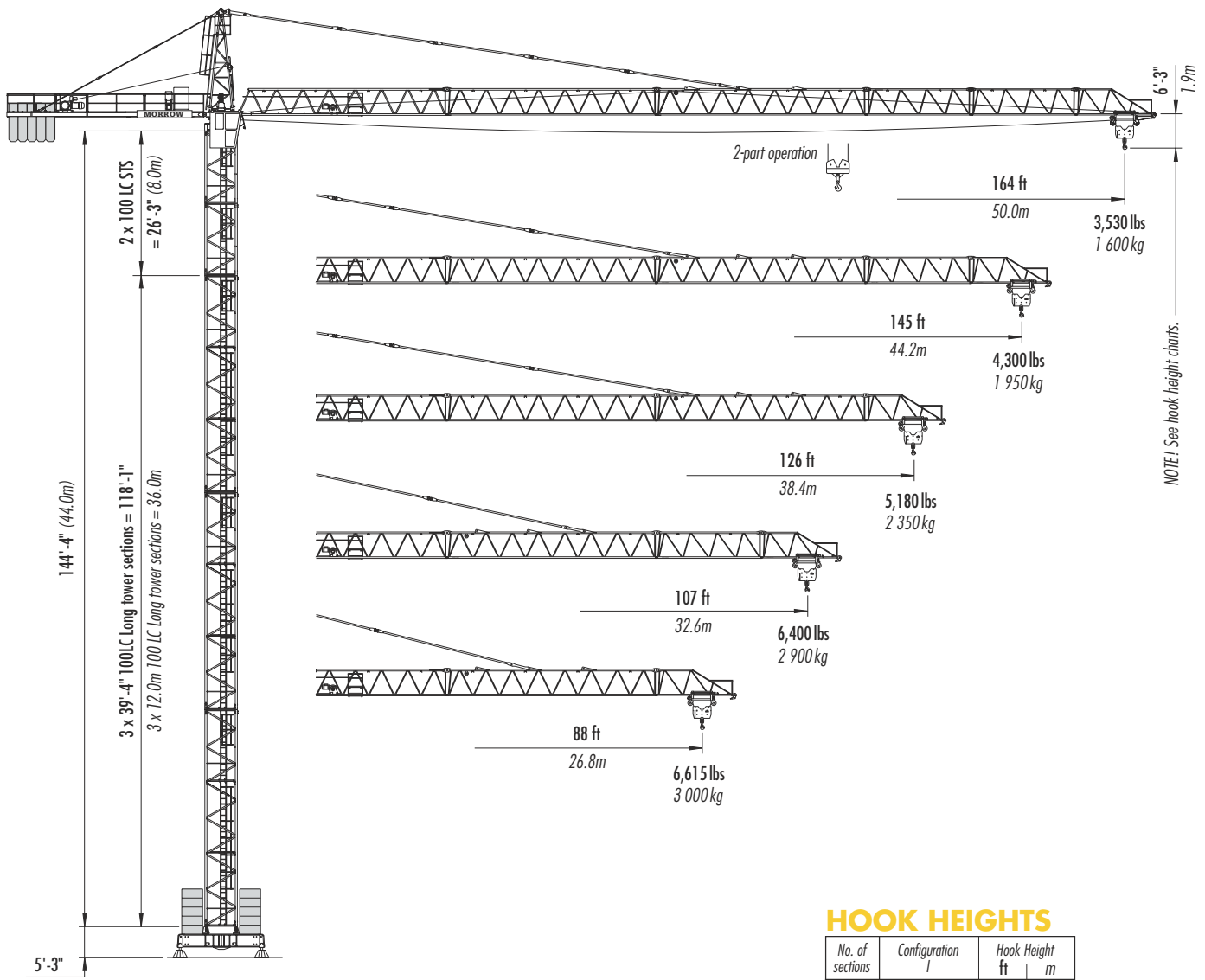


LIEBHERR 100 LC

TOWER CRANE



Configuration I

(stationary)
on adjustable spindle jacks
maximum height under hook
145'-8" (44.4m)

FREESTANDING

HOOK HEIGHTS

No. of sections	Configuration I	Hook Height ft	Hook Height m
1	100 LC - 12m	40.7	12.4
2	100 LC - 12m	80.1	24.4
3	100 LC - 12m	119.4	36.4
4	100 LC - 4m	132.5	40.4
5	100 LC - 4m	145.7	44.4

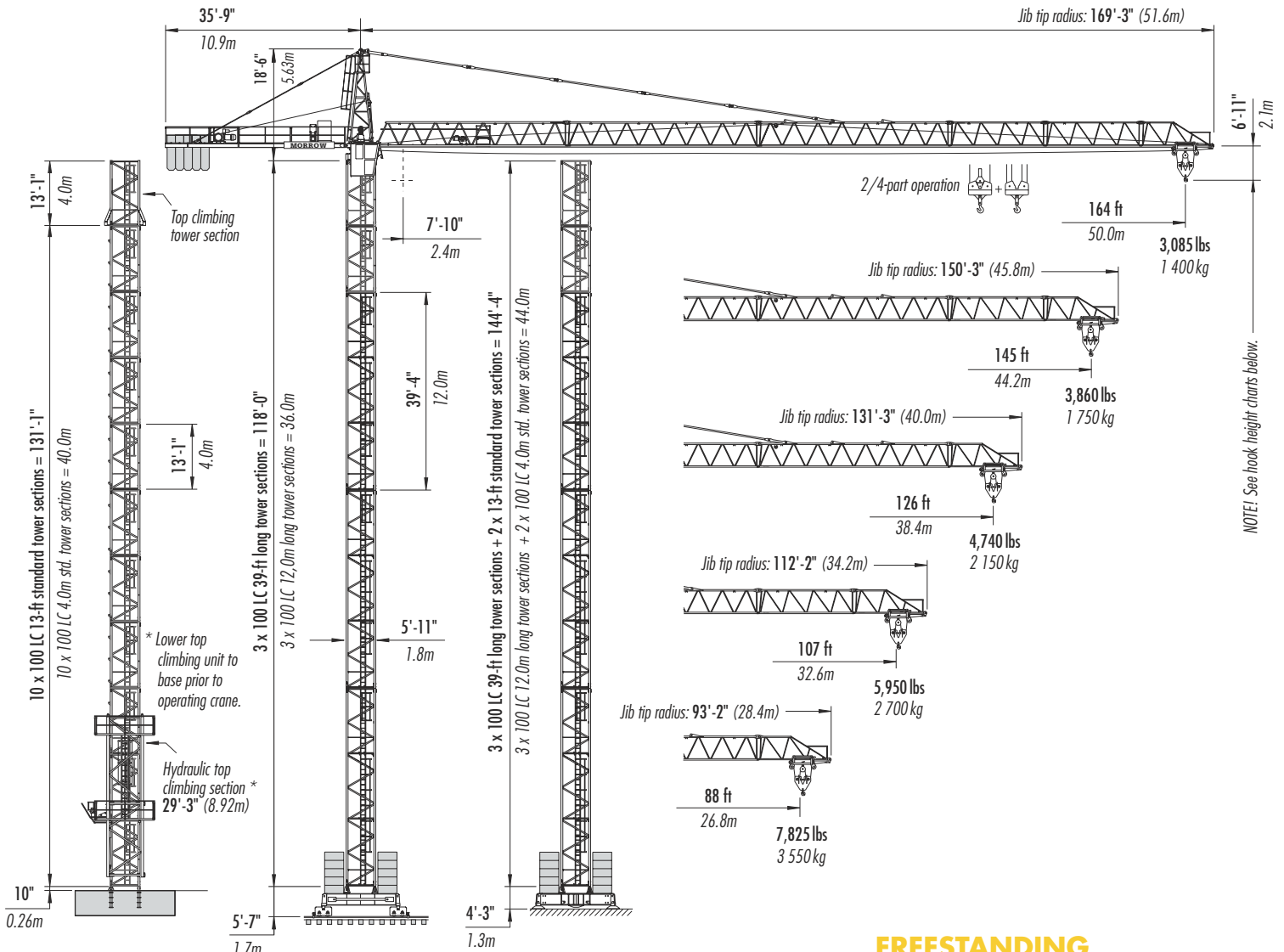
Other tower combinations are possible.
Contact Morrow for additional information.



Morrow Equipment

Configurations

LIEBHERR 100 LC



NOTE: See hook height charts below.

FREESTANDING

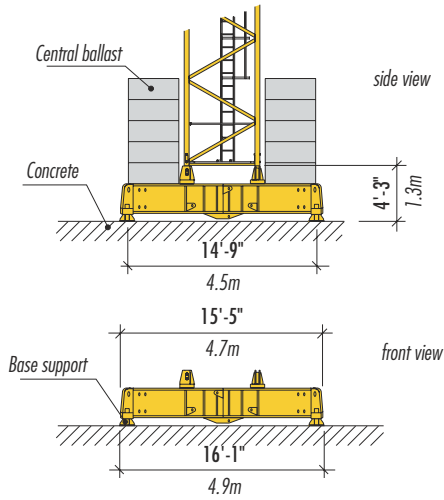
- Configuration II** (stationary) on concrete foundation maximum height under hook 141'-5" (43.1m)
- Configuration III** (rail travelling) maximum height under hook 146'-0" (44.5m)
- Configuration IV** (stationary) on concrete footing maximum height under hook 144'-8" (44.1m)

Other tower combinations are possible. Contact Morrow for additional information.

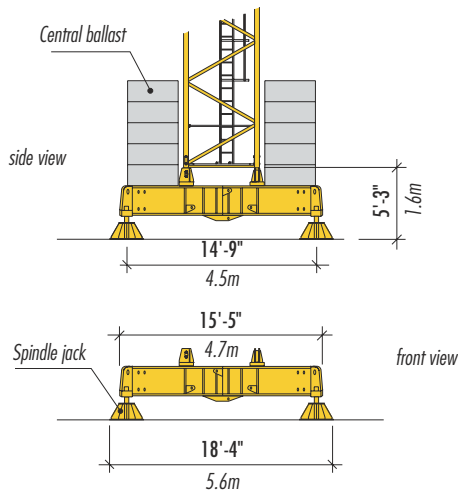
IMPORTANT! Please consult operation manual before erecting, operating, servicing and dismantling crane.

Configurations

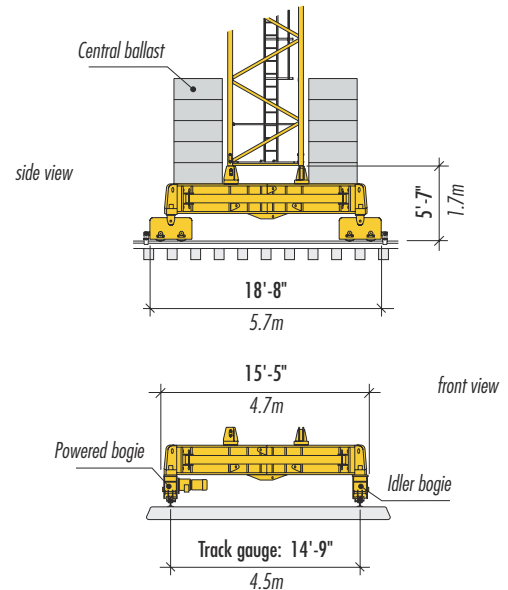
LIEBHERR 100 LC



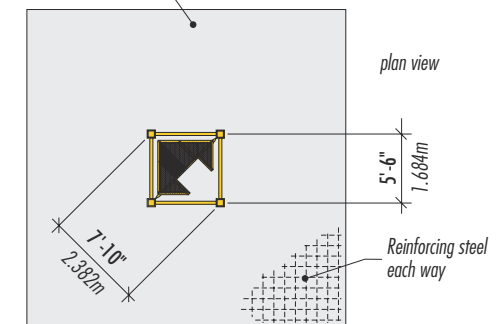
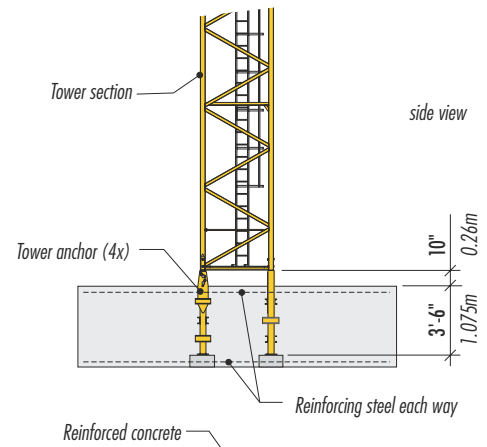
UNDERCARRIAGE DETAILS
on concrete footing



UNDERCARRIAGE DETAILS
on adjustable spindle (screw) jacks



UNDERCARRIAGE DETAILS
on rail travelling base



FOUNDATION DETAILS
with 100 LC tower
anchored in reinforced concrete slab

HOOK HEIGHTS







No. of sections	Configuration II	Hook Heights		No. of sections	Configuration III	Hook Heights		No. of sections	Configuration IV	Hook Heights	
		ft	m			ft	m			ft	m
1	100 LC 4m	10.2	3.1	1	100 LC 12m	41.0	12.5	1	100 LC 12m	39.7	12.1
2	100 LC 4m	23.3	7.1	2	100 LC 12m	80.4	24.5	2	100 LC 12m	79.1	24.1
3	100 LC 4m	36.4	11.1	3	100 LC 12m	119.8	36.5	3	100 LC 12m	118.4	36.1
4	100 LC 4m	49.5	15.1	4	100 LC 4m	132.9	40.5	4	100 LC 4m	131.6	40.1
5	100 LC 4m	62.7	19.1	5	100 LC 4m	146.0	44.5	5	100 LC 4m	144.7	44.1
6	100 LC 4m	75.8	23.1								
7	100 LC 4m	88.9	27.1								
8	100 LC 4m	102.0	31.1								
9	100 LC 4m	115.2	35.1								
10*	100 LC 4m	128.3	39.1								
11*	100 LC 4m	141.4	43.1								

Other tower combinations are possible. Contact Morrow for additional information.







* Lower top climbing unit to base prior to operating crane.

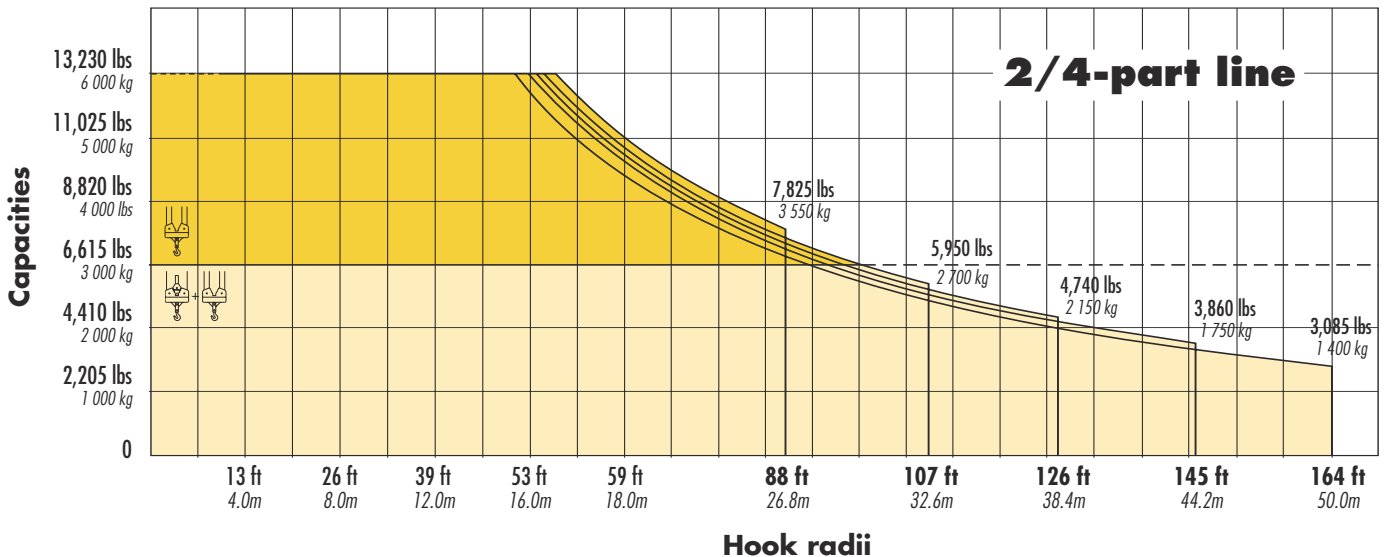
Radius and Capacities **LIEBHERR 100 LC**

2-part line

Hook reach	Maximum capacity		ft m	8	39	46	53	59	66	72	88	98	107	118	126	138	145	164
				2.4	12.0	14.0	16.0	18.0	20.0	22.0	26.8	30.0	32.6	36.0	38.4	42.0	44.2	50.0
164 ft 50.0m	6,615 lbs – 96.1 ft 3 000 kg – 29.3m		lbs kg	6,615 3 000	6,615 3 000	6,615 3 000	6,615 3 000	6,615 3 000	6,615 3 000	6,615 3 000	6,615 3 000	6,440 2 920	5,865 2 660	5,225 2 370	4,850 2 200	4,345 1 970	4,100 1 860	3,530 1 600
145 ft 44.2m	6,615 lbs – 100.1 ft 3 000 kg – 30.5m		lbs kg	6,615 3 000	6,615 3 000	6,615 3 000	6,615 3 000	6,615 3 000	6,615 3 000	6,615 3 000	6,615 3 000	6,615 3 000	6,130 2 780	5,470 2 480	5,070 2 300	4,565 2 070	4,300 1 950	
126 ft 38.4m	6,615 lbs – 102.0 ft 3 000 kg – 31.1m		lbs kg	6,615 3 000	6,615 3 000	6,615 3 000	6,615 3 000	6,615 3 000	6,615 3 000	6,615 3 000	6,615 3 000	6,615 3 000	6,260 2 840	5,580 2 530	5,180 2 350			
107 ft 32.6m	6,615 lbs – 103.7 ft 3 000 kg – 31.6m		lbs kg	6,615 3 000	6,615 3 000	6,615 3 000	6,615 3 000	6,615 3 000	6,615 3 000	6,615 3 000	6,615 3 000	6,615 3 000	6,400 2 900					
88 ft 26.8m	6,615 lbs – 88.0 ft 3 000 kg – 26.8m		lbs kg	6,615 3 000	6,615 3 000	6,615 3 000	6,615 3 000	6,615 3 000	6,615 3 000	6,615 3 000	6,615 3 000							

2/4-part line

Hook reach	Maximum capacity		ft m	8	39	46	53	59	66	72	88	98	107	118	126	138	145	164
				2.4	12.0	14.0	16.0	18.0	20.0	22.0	26.8	30.0	32.6	36.0	38.4	42.0	44.2	50.0
164 ft 50.0m	6,615 lbs – 90.5 ft 3 000 kg – 27.6m		lbs kg	13,230 6 000	13,230 6 000	13,230 6 000	12,565 5 700	10,955 4 970	9,700 4 400	8,665 3 930	6,855 3 110	5,975 2 710	5,400 2 450	4,760 2 160	4,385 1 990	3,900 1 770	3,660 1 660	3,085 1 400
145 ft 44.2m	6,615 lbs – 94.5 ft 3 000 kg – 28.8m		lbs kg	13,230 6 000	13,230 6 000	13,230 6 000	13,160 5 970	11,485 5 210	10,165 4 610	9,105 4 130	7,210 3 270	6,285 2 850	5,690 2 580	5,025 2 280	4,630 2 100	4,125 1 870	3,860 1 750	
126 ft 38.4m	6,615 lbs – 96.1 ft 3 000 kg – 29.3m		lbs kg	13,230 6 000	13,230 6 000	13,230 6 000	13,230 6 000	11,730 5 320	10,385 4 710	9,305 4 220	7,365 3 340	6,435 2 920	5,820 2 640	5,135 2 330	4,740 2 150			
107 ft 32.6m	6,615 lbs – 98.1 ft 3 000 kg – 29.9m		lbs kg	13,230 6 000	13,230 6 000	13,230 6 000	13,230 6 000	11,995 5 440	10,625 4 820	9,500 4 310	7,540 3 420	6,590 2 990	5,950 2 700					
88 ft 26.8m	6,615 lbs – 88.0 ft 3 000 kg – 26.8m		lbs kg	13,230 6 000	13,230 6 000	13,230 6 000	13,230 6 000	12,435 5 640	11,000 4 990	9,855 4 470	7,825 3 550							



Drive Information

LIEBHERR Tower crane model 100 LC

Hoist speeds and capacities

Hoist Unit	2-part line				
WiW 220 MY 301 25 hp (18.5 kW) AC hoist unit <ul style="list-style-type: none"> • 3-step pole-changing motor • Lebus-type rope drum 2P149 4P75	Gear	Capacity	Line Speed	Capacity	Line Speed
	1	up to 6,615 lbs	17 fpm	up to 3 000 kg	5.3 m/min
	2	up to 6,615 lbs	89 fpm	up to 3 000 kg	27 m/min
	3	up to 2,865 lbs	174 fpm	up to 1 300 kg	53 m/min
	4-part line				
	1	up to 13,230 lbs	8.5 fpm	up to 6 000 kg	2.6 m/min
	2	up to 13,230 lbs	43 fpm	up to 6 000 kg	13 m/min
3	up to 6,175 lbs	89 fpm	up to 2 800 kg	27 m/min	

NOTE! Capacities and line speeds indicated will vary depending on the amount of hoist rope installed. This crane model may be equipped with a hoist unit other than that specified in the data above. To verify, check the serial number of the crane and refer to the Liebherr 100 LC Operation Manual for additional information.

Motor information

Drive Unit	Horsepower	Kilowatts	Speeds	
Trolley	0.9/2.7/4.0 hp	0.65/2.0/3.0 kW	30/98/197 fpm	9/30/60 m/min
Swing	6.7 hp	5.0 kW	0.8 rpm	
Rail travelling	2 x 4.0 hp	2 x 3.0 kW	0 -75 fpm	0 - 23.0 m/min


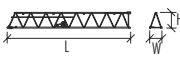
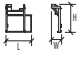
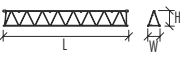
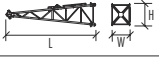
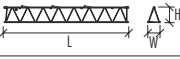
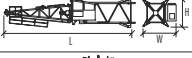
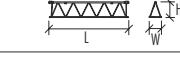

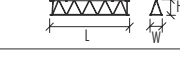
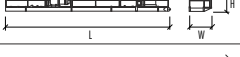
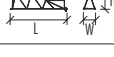

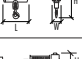



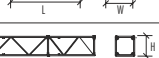

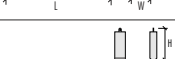



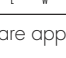
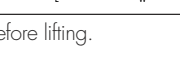
Power requirements

480 V — 3-phase — 60 Hz — 55 Amps — 33 kVA

Subject to changes without prior notice. For additional information, contact Morrow Equipment.

Component List

LIEBHERR 100 LC

Component	Dimensions <i>length x width x height</i>	Weight	Component	Dimension <i>length x width x height</i>	Weight
Operator's Cab 	6'-2" x 3'-8" x 7'-2" 1.87m x 1.12m x 2.18m	970 lbs 440 kg	Jib butt section ① 	38'-8" x 3'-10" x 5'-3" 11.79m x 1.17m x 1.59m	3,350 lbs 1 520 kg
Cab access platform 	5'-6" x 2'-2" x 6'-0" 1.68m x 0.67m x 1.82m	465 lbs 210 kg	Jib section ② 	38'-4" x 3'-10" x 5'-1" 11.68m x 1.17m x 1.54m	2,340 lbs 1 060 kg
Tower Top 	18'-5" x 3'-10" x 5'-2" 5.62m x 1.16m x 1.57m	1,630 lbs 740 kg	Jib section ③ 	39'-10" x 3'-10" x 5'-4" 11.83m x 1.17m x 1.63m	2,380 lbs 1 080 kg
Slewing assembly ¹ 	35'-8" x 11'-10" x 7'-9" 10.88m x 3.6m x 2.37m	13,515 lbs 6 130 kg	Jib section ④ 	19'-9" x 3'-10" x 5'-0" 6.02m x 1.17m x 1.53m	795 lbs 360 kg
Turntable with support 	6'-7" x 6'-4" x 5'-3" 2.01m x 1.93m x 1.6m	5,710 lbs 2 590 kg	Jib section ⑤ 	19'-8" x 3'-10" x 4'-11" 6.0m x 1.17m x 1.51m	595 lbs 270 kg
Counterjib ² 	36'-2" x 5'-6" x 4'-7" 11.0m x 1.67m x 1.39m	5,800 lbs 2 630 kg	Jib tip section ⑥ 	13'-8" x 3'-10" x 5'-8" 4.16m x 1.17m x 1.72m	540 lbs 245 kg
Trolley 	5'-2" x 4'-5" x 2'-6" 1.57m x 1.34m x 0.77m	420 lbs 190 kg	Jib assembly ⁶ 164 ft (50.0m) ①②③④⑤⑥	165'-2" x 3'-10" x 5'-8" 50.35m x 1.17m x 1.72m	11,600 lbs 5 260 kg
Hook block 	2'-11" x 9" x 3'-2" 0.88m x 0.24m x 0.97m	330 lbs 150 kg	Jib assembly ⁶ 145 ft (44.2m) ①②③④⑥	146'-2" x 3'-10" x 5'-8" 44.55m x 1.17m x 1.72m	10,825 lbs 4 910 kg
Hoist unit ³ 25 hp (18.5 kW) 	4'-11" x 4'-6" x 2'-4" 1.5 x 1.36m x 0.71m	1,445 lbs 655 kg	Jib assembly ⁶ 126 ft (38.4m) ①②③⑥	127'-2" x 3'-10" x 5'-8" 38.75m x 1.17m x 1.72m	10,075 lbs 4 570 kg
Tower section ⁴ (Standard) 	14'-0" x 5'-11" x 6'-3" 4.27m x 1.8m x 1.9m	2,435 lbs 1 105 kg	Jib assembly ⁶ 107 ft (32.6m) ①③④⑥	108'-1" x 3'-10" x 5'-8" 32.95m x 1.17m x 1.72m	8,245 lbs 3 740 kg
Tower section (Long) 	40'-3" x 5'-11" x 5'-11" 12.27m x 1.8m x 1.8m	6,330 lbs 2 870 kg	Jib assembly ⁶ 88 ft (26.8m) ①③⑥	89'-1" x 3'-10" x 5'-8" 27.15m x 1.17m x 1.72m	7,340 lbs 3 330 kg
Climber tower section 	14'-0" x 7'-5" x 7'-5" 4.27m x 2.26m x 2.26m	3,020 lbs 1 370 kg	Cross member I 	21'-10" x 2'-4" x 2'-6" 6.66m x 0.71m x 0.75m	4,650 lbs 2 110 kg
Top climbing unit ⁵ 	29'-3" x 7'-4" x 7'-4" 8.92m x 2.25m x 2.25m	7,630 lbs 3 460 kg	Cross member II 	21'-10" x 2'-7" x 2'-6" 6.66m x 0.78m x 0.75m	5,135 lbs 2 330 kg
Counterweight block A 	3'-3" x 1'-8" x 7'-10" 0.99m x 0.5m x 2.4m	5,620 lbs 2 550 kg	Central ballast block B2 	13'-1" x 3'-11" x 1'-6" 4.0m x 1.2m x 0.46m	11,025 lbs 5 000 kg
Counterweight block B 	3'-3" x 1'-8" x 6'-3" 0.99m x 0.5m x 1.9m	4,300 lbs 1 950 kg	Central ballast block D2 	13'-1" x 3'-11" x 9" 4.0m x 1.2m x 0.23m	5,510 lbs 2 500 kg

NOTE: Weights and dimensions are approximate. Verify weights and dimensions of components before lifting.

- ¹ Includes tower top, pendants, cab, swing motor, slewing ring and slewing ring support.
- ² Includes counterjib section, hoist unit, pendants and handrails. Does not include wire rope.
- ³ Does not include wire rope.
- ⁴ Standard tower section is available with and without climbing lugs. Towers with climbing lugs must be installed in order to top climb crane.
- ⁵ Includes tower frame with platforms and handrails, hydraulic unit with ram and support shoes, and ladder.
- ⁶ Jib assemblies consist of jib sections, trolley, trolley drive unit with wire rope, pendant bars and connecting pins.



Morrow Equipment C O M P A N Y, L. L. C.

3218 Pringle Road SE • P O Box 3306 • Salem, Oregon 97302-0306 USA
Tel. 503.585.5721 • Fax. 503.363.1172 • www.morrowequipment.com

The American home of
LIEBHERR
TOWER CRANES

Atlanta, GA • Charlotte, NC • Chicago, IL • Denver, CO • Honolulu, HI • Houston, TX • Los Angeles, CA • Las Vegas, NV
Millwood, NY • St. Louis, MO • San Francisco, CA • Dallas, TX • Seattle, WA • Miami, FL • Tampa, FL • Washington, DC
Sydney, Australia • Wellington, New Zealand • Vancouver, BC, Canada • Toronto, ON, Canada • México DF, México